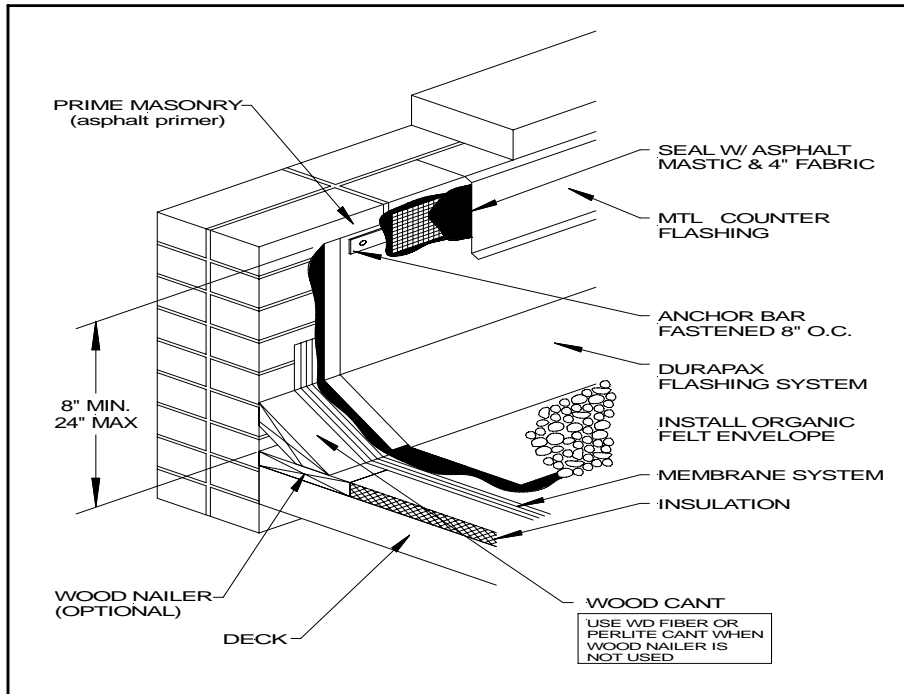


Durapax Flashing Specification No. B-I-400-C



fully adhered in the same manner as the first ply. It shall extend six (6) inches beyond the base of the cant and up the wall to the same height as the base ply. All laps must be a minimum of four (4) inches. At no point shall the lap of one ply fall directly over the lap of a preceding ply.

Note: When installing the Flashing in Durapax asphalt modified bitumen cement, the wall and the back of each ply are to be coated and each sheet pressed into place to assure proper adhesion. All flashing side laps must utilize the selvage edge as the lower ply of the lap.

Install a continuous anchor bar approximately 1/2 inch from the top edge of the flashing, fastening into the wall on 8 inch centers, with fasteners specifically designed for this intended use.

Note: The anchor bar may be omitted when attaching to a wood substrate. Attach to wood substrate as follows - along the edge of the completed flashing system, mechanically attach, 8 inches on center for up to 12 inches high and 4 inches on center for up to 24 inches high, using nails with a ring shank and one inch metal head minimum.

Strip in the top edge of the completed flashing system, including the anchor bar or fasteners, with a 4 inch strip of reinforcing fabric set in and top coated with asphalt flashing cement.

Install metal counterflashing to extend a minimum of 4 inches down over the top of the flashing. If the flashing is run up and over the top of a parapet, nailing and stripping can be completed at the outer edge on the top of the parapet's wood nailer and a metal coping installed.

WARRANTY

Up to 20 years

MATERIALS

1 ply Durapax FL-0020 Smooth Polyester SBS Flashing

1 ply Durapax FL-0030 Granulated Polyester SBS Flashing

Durapax PG-0016 Asphalt Primer

Durapax PG-0010 Asphalt Modified Bitumen Cement

SURFACE PREPARATION

Masonry surfaces must be structurally sound and reasonably smooth, clean and dry. Prime wall area to receive the flashing with Durapax PG-0016 Asphalt Primer at a rate of 1/2 to 1 gallon per 100 sq. ft.

FLASHING APPLICATION

Install the following flashing system at all intersections of vertical and horizontal surfaces.

After the primary field membrane has been completed, install one (1) ply of Smooth Polyester SBS Flash-

ing fully adhered in a trowel application of Durapax PG-0010 Asphalt Modified Bitumen Cement. Apply using a 1/8" notched metal trowel at a rate of approximately 2 to 4 gallons per 100 sq. ft. Interply rate is 1 1/2 to 2 1/2 gallons per 100 sq. ft. To assure proper attachment, a thin coat of the mastic must be applied to the back of the membrane as well as to the substrate. Flashing length shall be held to no more than the width of the roll (horizontally) and all flashing side laps must utilize the selvage edge as the lower ply of the lap. Install from the base of the cant and up the face of the cant and wall to a minimum height of eight (8) inches and a maximum of twenty four (24) inches above the horizontal surface of the roof membrane.

Over the base ply of Smooth Polyester Flashing, install one (1) ply of Granulated Polyester SBS Flashing, not to exceed the width of the roll,